

ANCHOR LÅS

Hardened Steel Padlocks

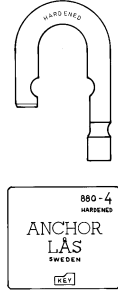
Padlock 880-4 B27 / B50

EN Grade 5



Certified by SBSC in Sweden
Certificate No 05-461

- A padlock for maximum security applications. 70 mm case-hardened steel padlock, shackle dia 15 mm.
- Applications: Containers, train wagons, trucks, heavy sliding doors and warehouses etc.
- The lock cylinder is protected by a hardened 4,5 mm free-spinning protection plate.
- Key removable only in locked position.



Padlock 880-4 L

- Option: Padlock 880-4 L, removable shackle.

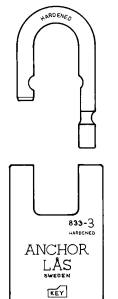
Padlock 833-3 B28

EN Grade 4



Certified by SBSC in Sweden
Certificate No 05-459

- Padlock with raised shoulders to provide extra protection. 60 mm case hardened steel padlock, shackle dia 11 mm.
- Applications: Train wagons, trucks, warehouses and heavy sliding doors etc.
- The lock cylinder is protected by a hardened 3 mm free-spinning protection plate.
- Key removable only in locked position.



Padlock 833-3 L

- Option: Padlock 833-3 L, removable shackle.

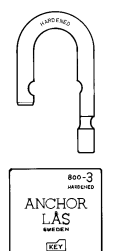
Padlock 800-3 B28 / B50

EN Grade 4



Certified by SBSC in Sweden
Certificate No 05-459

- Extra strong padlock, 60 mm case hardened steel padlock, shackle dia 11 mm.
- Applications: Trucks, construction equipment, roller-shutter doors, warehouses and remote storage areas.
- The lock cylinder is protected by a hardened 3 mm free-spinning protection plate.
- Key removable only in locked position.

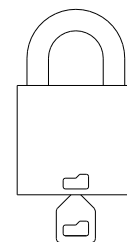



Padlock 800-3 L

- Option: Padlock 800-3 L, removable shackle.

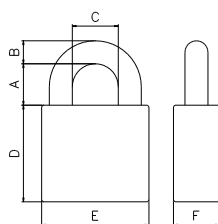


- The ANCHOR LÅS rotating detainer disc cylinder, 9 discs, 1.5 million different key combinations.
- The cylinder has no spring-loaded parts, which in other types of mechanism can cause malfunction through wear, dirt, moisture, corrosion or freezing.
- Maximum resistance against picking and manipulation.
- The lock cylinder offers extensive master-keying possibilities.
- All our padlocks and camlocks can be made to operate with just one key.
- Our extra strong key, thickness 3 mm, is made of nickel silver. The key is design patented.



Use symbol  to insert key in right position.

Model number	EN Grade	Swedish Padlock Class	Body					Shackle					Keying		
			Material	Finish	Thickness mm (F)	Thickness mm (E)	Height mm (D)	Material	Finish	Diameter mm (B)	Clearance mm (A)	Clearance mm (C)	Rekeyable	Non Rekeyable	Master-keying
880-4	5	4	HS	CH	30	70	63	HS	CH	15	27	29,5	●		●
880-4 B50	5	4	HS	CH	30	70	63	HS	CH	15	50	29,5	●		●
800-3	4	3	HS	CH	25	60	56	HS	CH	11	28	28	●		●
800-3 B50	4	3	HS	CH	25	60	56	HS	CH	11	50	28	●		●
833-3	4	3	HS	CH	25	60	88	HS	CH	11	28	28	●		●
835-3	3	2	BR	CH	20	56	51	HS	CH	11	25	27	●		●
835-3 B50	3	2	BR	CH	20	56	51	HS	CH	11	50	27	●		●
820-2	3	2	BR	CH	19	46	46	HS	CH	8	25	24	●		●
820-2 B60	3	2	BR	CH	19	46	46	HS	CH	8	60	24	●		●
820-2 B110	3	2	BR	CH	19	46	46	HS	CH	8	110	24	●		●
820-2	3	2	BR	CH	19	46	46	SS	-	8	25	24	●		●
820-2 B60	3	2	BR	CH	19	46	46	SS	-	8	60	24	●		●
820-2 B110	3	2	BR	CH	19	46	46	SS	-	8	110	24	●		●
810-1	2	1	BR	CH	19	39	40	SS	-	6,5	20	20,5		●	●
810-1 B80	2	1	BR	CH	19	39	40	SS	-	6,5	80	20,5		●	●
810-1	2	1	BR	CH	19	39	40	HS	CH	6,5	20	20,5		●	●



HS= case hardened steel

SS=stainless steel

BR=brass

CH=chrome plated

SECURITY GRADE EUROPEAN STANDARD EN 12320							
Requirements	1	2	3	4	5	6	
Corrosion, salt spray (time)		24	24	96	96	96	h
Key retained in open position	no	no	no	yes	yes	yes	
Minimum number of differs	300	1 000	2 500	5 000	10 000	20 000	
Non-interpassing of keys with just one Interval differ – Torque on key	1	1	1,5	1,5	1,5	1,5	Nm
Load on cylinder plug or locking mechanism			4	5	10	15	kN
Torque resistance of cylinder plug		2,5	5	15	20	30	Nm
Pulling of shackle/staple	3	5	15	30	70	100	kN
Twisting of shackle/staple	40	100	200	450	1 200	2 500	Nm
Cutting of shackle/staple	6	15	25	35	70	100	kN
Blow on lock body and shackle/staple (weight/g x height/mm)			1 250 x 800	3 050 x 1 000	6 550 x 1 400	7 150 x 1 500	x 5
Test temperature			-20°C	-20°C	-40°C	-40°C	
Drilling				2	4	8	min
Sawing				2	4	8	min
Requirements		1	2	3	4	5	
SWEDISH PADLOCK CLASS SSF STANDARD							
Extra tests SSF padlock standard		1	2	3	4	5	
Lock picking and tampering		2 simple tools	2 simple tools	10 composite tools	10 composite tools	30 advanced tools	min
Attack with manual Tools				5	10	15	min